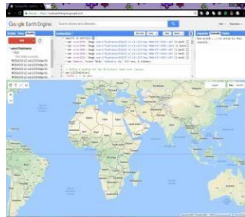




#### Data acquisition

- Global land cover products download from ESA/CCI
- Zambezi basin Shapefile download from ZAMWIS website



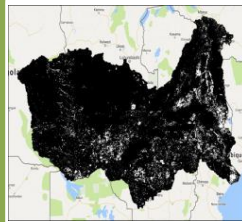
#### Data upload to Google Earth Engine

- GeoTiff files of global land cover maps uploaded
- To enable vector import to GEE:
  1. Conversion of Zambezi Shapefile from .shp to .csv
  2. Creating a Google Fusion Table using the Zambezi .csv file



#### Defining visualization parameters

- Defined the palette for visualisation of the land cover classes. The colors were defined using the web standard CSS color value scheme, specified as hexadecimal strings indicating the combination of red, green and blue.



#### Change analysis

- Clipping the Zambezi basin from annual global land cover maps
- Change Vector analysis to identify areas of high spectral variation (areas that experienced land cover change)



Land Cover area estimation using ArcGIS 10.5